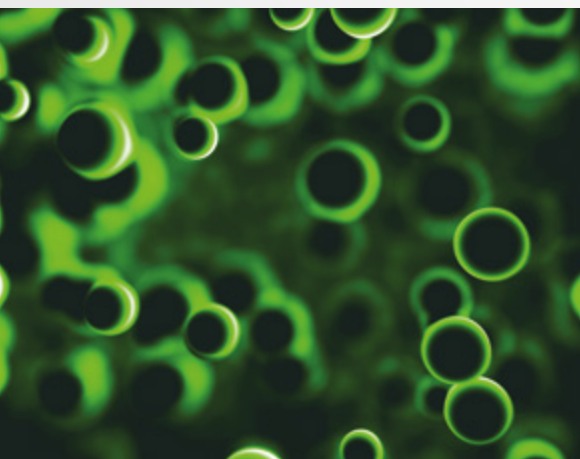




# GeneProof®

## GeneProof Ureaplasma PCR Kit



### MORE INFORMATION WITH LESS SAMPLES

- Enables the identification of *Ureaplasma urealyticum* using 3-channel system

### SIMPLE LABORATORY WORKFLOW

- Easily combinable with other GeneProof PCR kits in one workflow

### CONTAMINATION PREVENTION

- Master Mix contains Uracil-DNA glycosylase (UNG) and dUTPs eliminating carryover contamination

#### ORDER INFORMATION

REF	PACKAGE
UUP/ISEX/025	25 reactions
UUP/ISEX/100	100 reactions



COMPATIBLE WITH A WIDE  
RANGE OF REAL-TIME PCR  
DEVICES



CERTIFIED  
DIAGNOSTIC TEST



# GeneProof Ureaplasma PCR Kit

- + GeneProof Chlamydia trachomatis PCR Kit
  - + GeneProof Neisseria gonorrhoeae PCR Kit
  - + GeneProof CT/NG/MG Multiplex PCR Kit
  - + GeneProof Gardnerella vaginalis PCR Kit
  - + GeneProof MH/UU/UP Multiplex PCR Kit
  - + GeneProof Mycoplasma genitalium/hominis PCR Kit
  - + GeneProof Ureaplasma PCR Kit
  - + GeneProof Herpes Simplex Virus (HSV-1/2) PCR Kit
  - + GeneProof Trichomonas vaginalis PCR Kit
  - + GeneProof Treponema pallidum PCR Kit
- FOR SCREENING PURPOSES**
- + GeneProof Human Papillomavirus (HPV) Screening PCR Kit

INDICATION	<i>in vitro</i> diagnostic medical device
REGULATORY STATUS	CE IVD
INTENDED USER	For professional use in laboratories with trained staff
TECHNOLOGY	Real-time PCR
TYPE OF ANALYSIS	Qualitative
TARGET SEQUENCE	<i>UreD</i> gene
ANALYTICAL SPECIFICITY	<i>U. parvum</i> , 100% <i>U. urealyticum</i> , 100%
ANALYTICAL SENSITIVITY (LOD)	Reaches up to 0.687 cp/μl with the probability 95 %
EXTRACTION/INHIBITION CONTROL	PCR inhibition and DNA extraction efficiency control
VALIDATED SPECIMEN	<b>Swab, urine</b>
STORAGE	-20 ± 5 °C
VALIDATED EXTRACTION METHODS	croBEE 201A Nucleic Acid Extraction System GeneProof PathogenFree DNA Isolation Kit
INSTRUMENTS	croBEE Real-Time PCR System AriaMx Real-Time PCR System CFX Connect™ / CFX96™ / Dx Real-Time PCR Detection System LightCycler® 480 LineGene 9600 / 9600 Plus Mic qPCR Cyclers Rotor-Gene 3000 / 6000** / Q SLAN® Real-Time PCR System
REQUIRED DETECTION CHANNELS	FAM, HEX, Cy5
EXTERNAL QUALITY ASSESSMENT	Regularly tested in QCMD and Instand e.V. External Quality Assessment Panels - results at <a href="http://www.geneproof.com">www.geneproof.com</a>