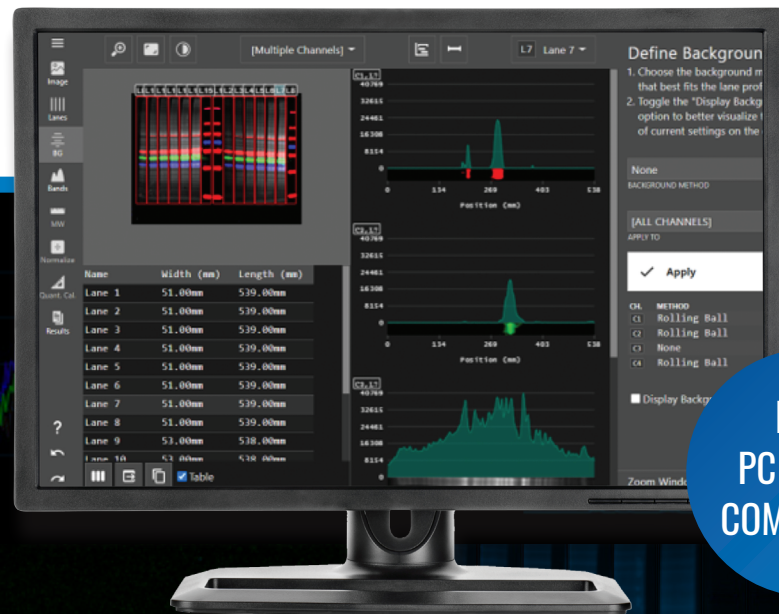




# AZURESPOT PRO

ANALYSIS OF 1D GELS AND WESTERN BLOTS | BAND ANALYSIS

ARRAY ANALYSIS | COLONY COUNTING



NOW  
PC & MAC  
COMPATIBLE

# AZURESPOT PRO ANALYSIS

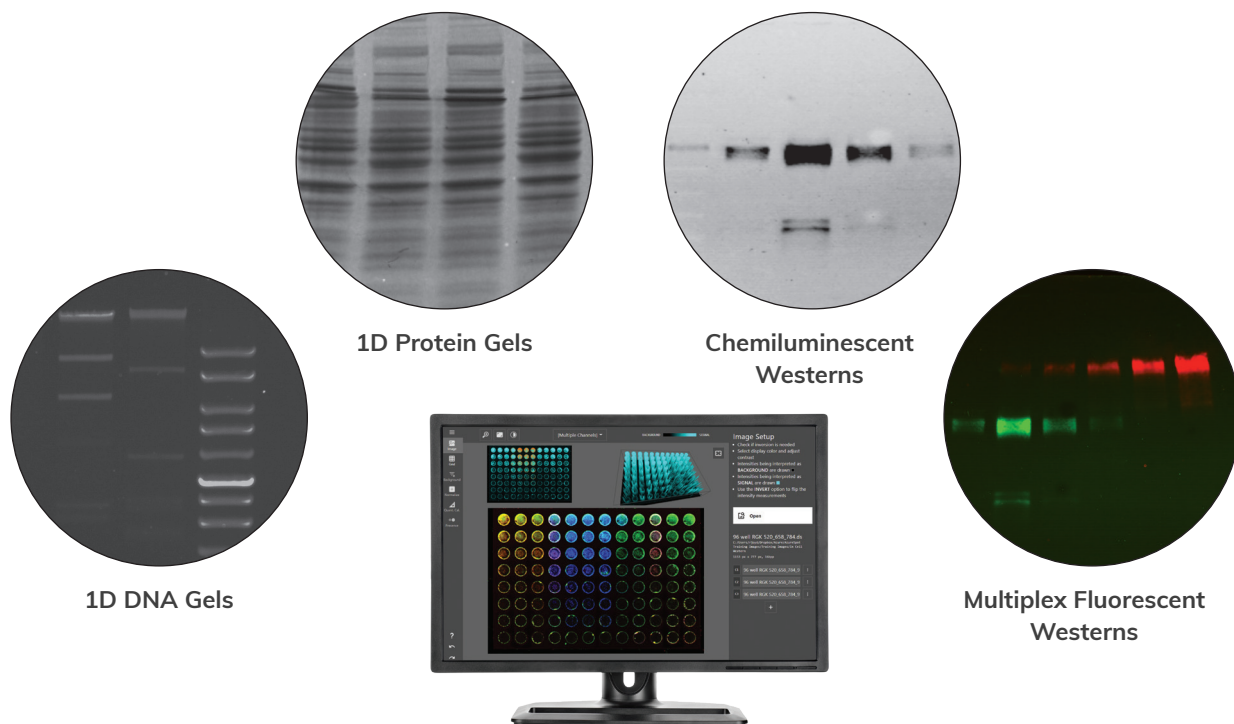
AzureSpot Pro combines several powerful analysis tools into one convenient and easy to use package. Designed to guide you through the analysis process, AzureSpot Pro makes complex and customized analysis simple.

## SUGGESTED APPLICATIONS/IMAGES

DNA Gel | Protein Gel | Chemi Western | Fluorescent Western

Cell-based Western/Fluorescent Plate-based Assay

Phosphor Imaging | Bacterial Plate



## TOOLS FOR...

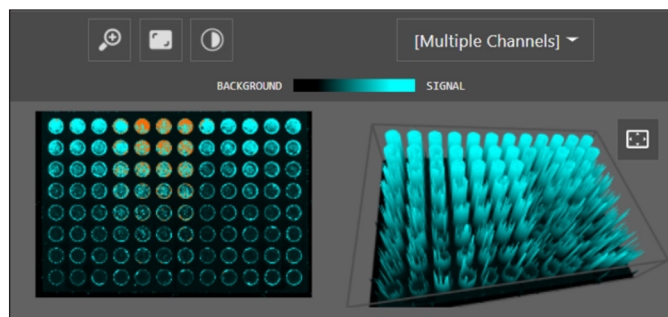
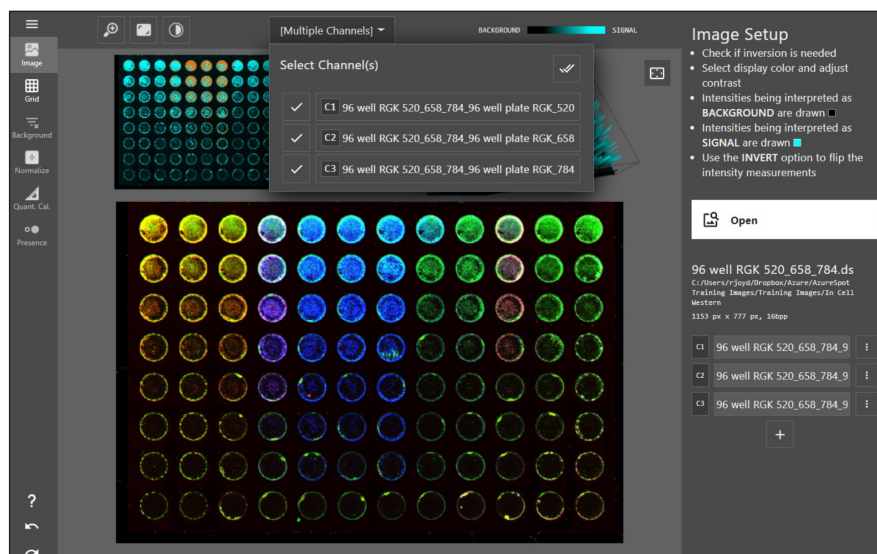
- SATURATION DETECTION
- LANE AND BAND DETECTION
- BLOT AND ARRAY NORMALIZATION
- MOLECULAR WEIGHT ANALYSIS
- QUANTITY CALIBRATION
- MULTIPLEX ANALYSIS
- COLONY COUNTING



Download a 30-day trial  
of AzureSpot Pro

## SINGLE CHANNEL / MULTICHANNEL IMAGES

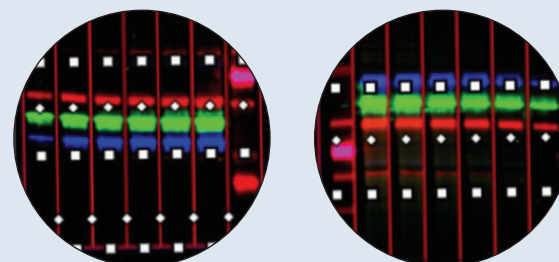
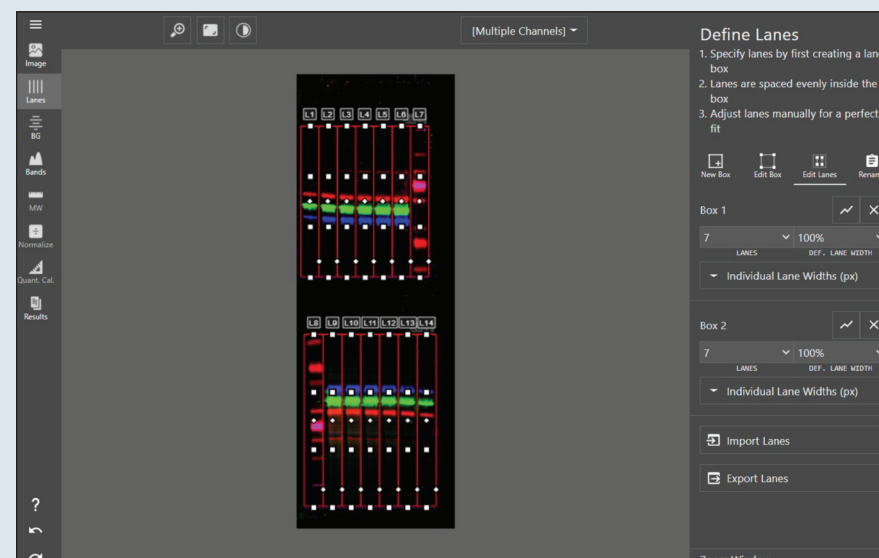
Analyze single channel or multichannel images with options to view individual channels in a multiplex image, view all channels simultaneously, or delete channels.



Automatic Saturation Detection highlights saturated pixels. A 3D model of each image alongside the saturation detection allows users to visualize signal trends before in-depth analysis even begins.

## MULTIPLE LANE BOXES

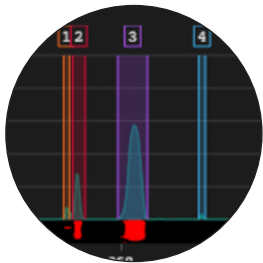
Customize the number of lanes, number of lane boxes, and even the shape of each box and lane for the most accurate analysis of each image. Multiple lane boxes allow for simultaneous analysis of multiple blots, gels or plates in a single image.



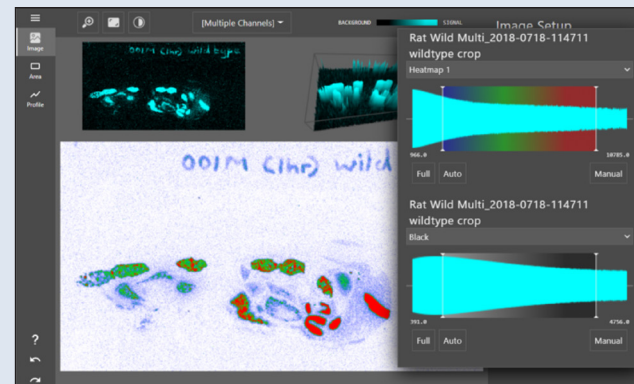
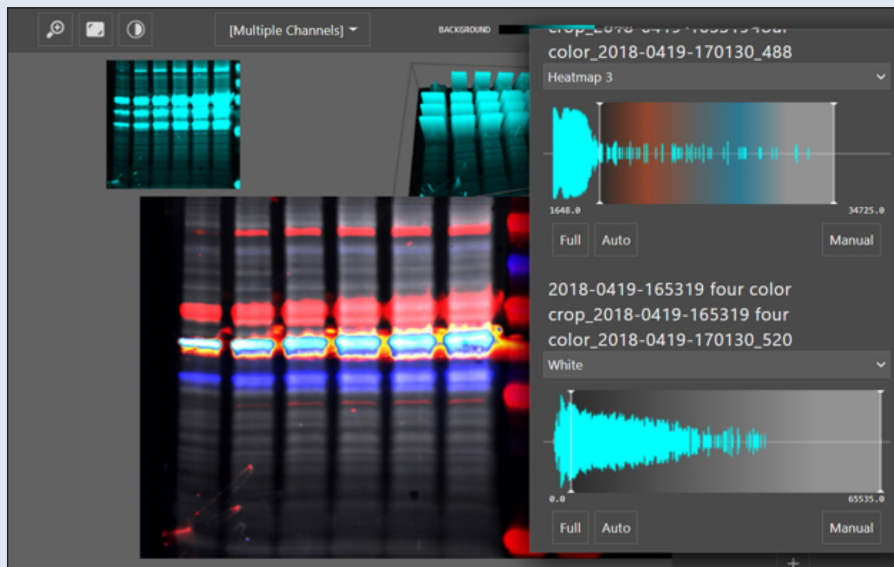
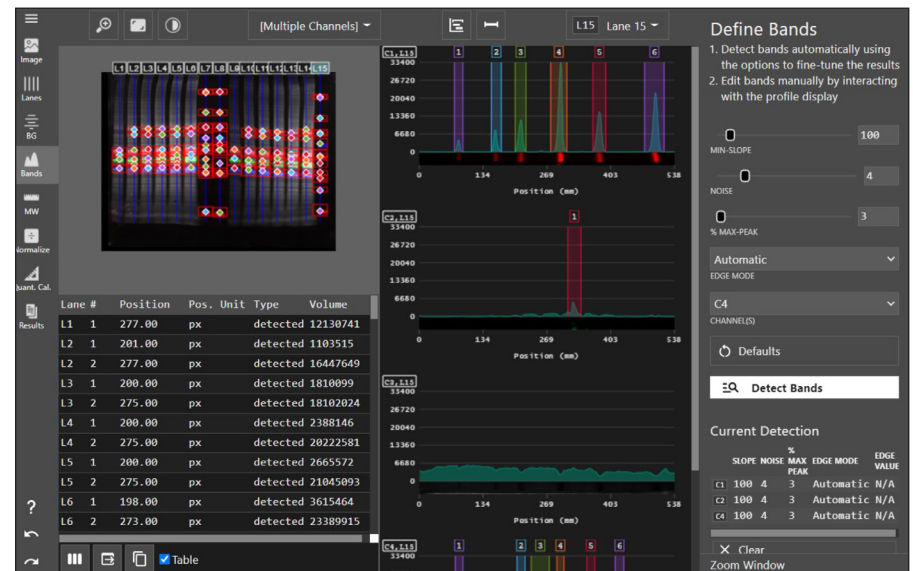


## BAND DETECTION

Band detection options allow users to customize and fine tune analysis to their analysis style. Use automatic band detection, detect bands manually using lane profiles, or detect by clicking on the image itself. Customize automatic band detection by channel or detect globally across a multichannel image with one set of parameters.



Colored band boxes allow for easy visualization and help distinguish bands that are close together.

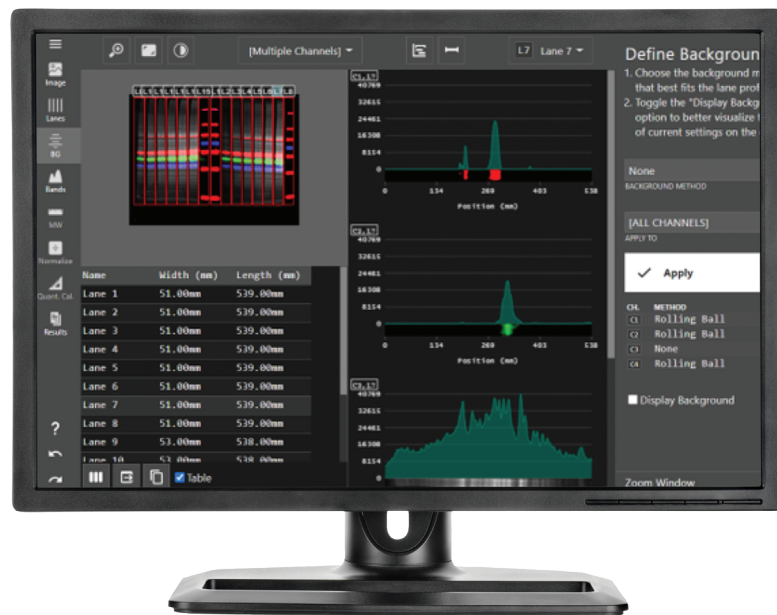


## PSEUDO COLOR

Multiple pseudo color options and combinations allow users to view data in whatever way best suits the analysis.

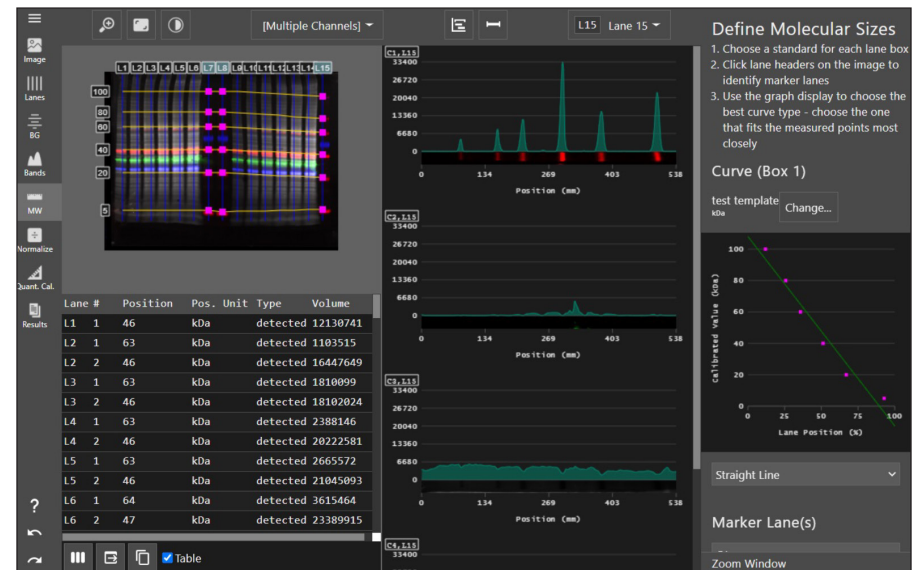
## BACKGROUND SUBTRACTION

Choose from several background subtraction methods including rolling ball and image rectangle, with the ability to customize background subtraction for each channel within your image allowing for more accurate analysis in certain situations such as total protein detection and normalization.

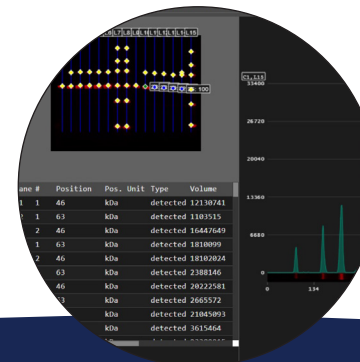


## DATA TOOLS

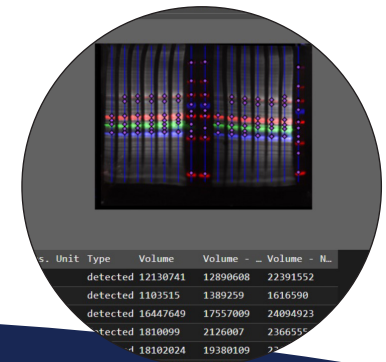
Molecular weight, quantity calibration and normalization tools, including options for normalization using house keeping proteins or total protein, allow users to get the most out of their data.



Quality calibration



Define normalization



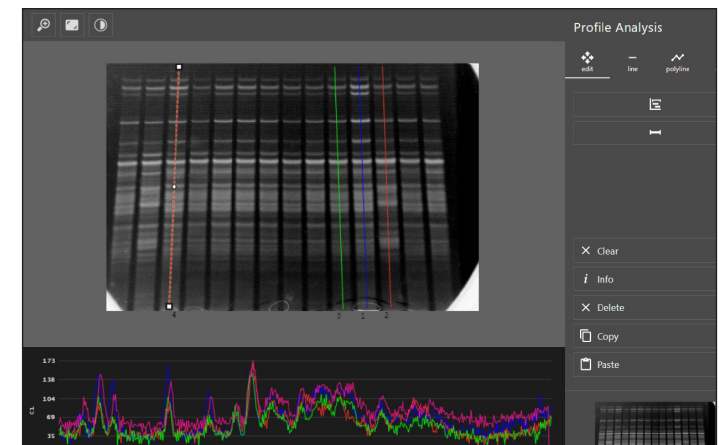
## ANALYSIS MODULES

A variety of analysis modules give users powerful analysis tools at their disposal, including modules for:

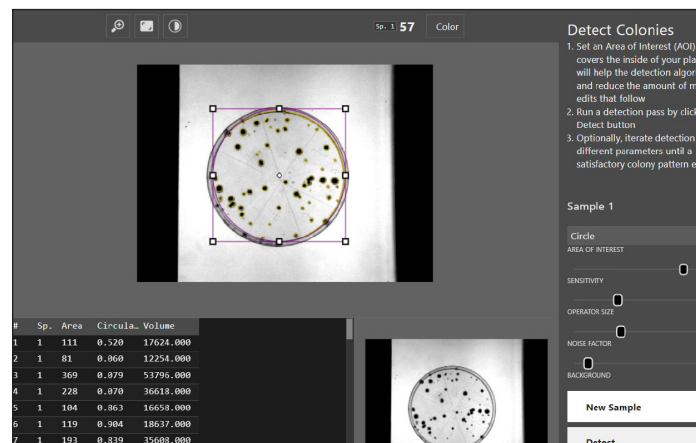
- Multiplex and single channel gels and blots
- Plates and arrays
- Area analysis
- Profile analysis
- Colony counting



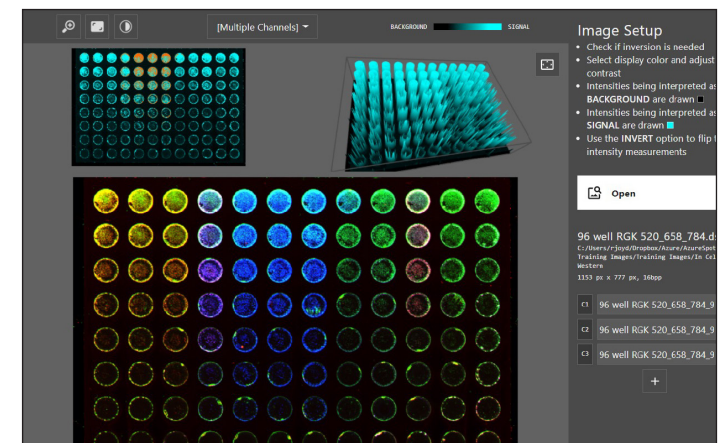
For simple gels with few bands, Area Analysis allows users to draw shapes around areas of interest for quick data results.



Profile Analysis makes it easy to visualize and document trends and similarities within an image.



The Colony Counter module provides fast and easy counting of spots and features.

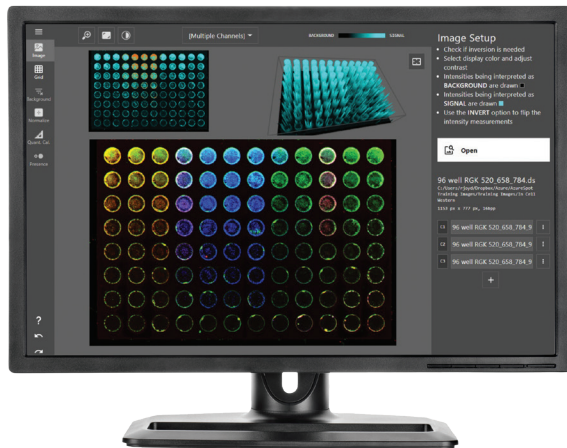
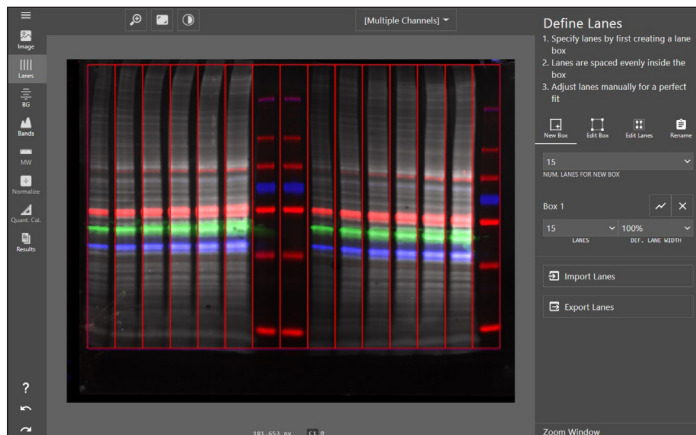


Arrays and plate-based assays can utilize the Array module's grid-based analysis system which includes options for normalization and presence/absence detection.



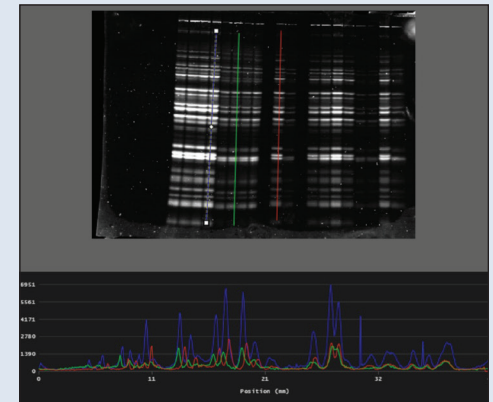
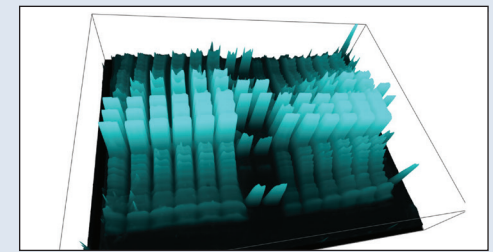
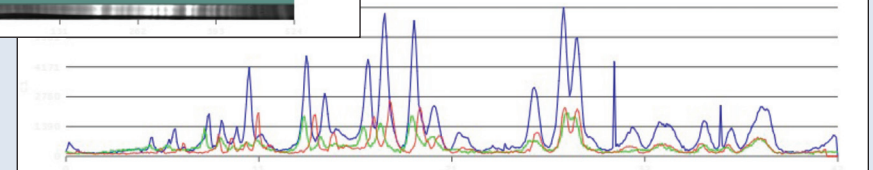
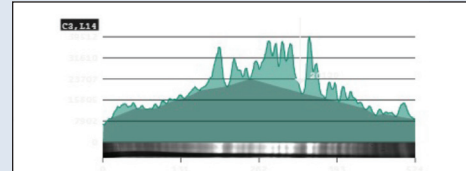
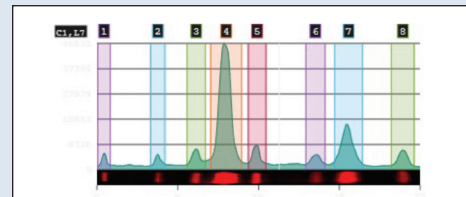
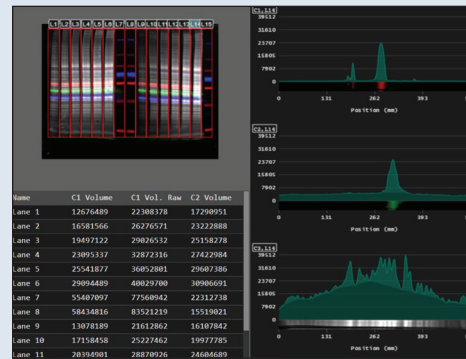
## INTEGRATED TUTORIAL

AzureSpot Pro includes an integrated tutorial to guide you through analysis of your image.



## EXPORT YOUR RESULTS

Beyond just saving your image, you can export your data in multiple formats. Export your analysis data directly into excel, copy your image window to clipboard, or paste the image profile into other programs for further analysis.



## Specifications

## AzureSpot Pro

Part number	AC1078	
Product description	Analysis of 1D gels and Western blots. Band analysis. Array Analysis. Colony counting. 4 Software Installations. PC and Mac compatible.	
	<b>Windows System Requirements</b>	<b>macOS System Requirements</b>
Operating system	Windows 8.1 64bit (Windows 10 Professional 64bit recommended)	macOS 10.15 Catalina* (macOS 11 Big Sur recommended)
CPU	Intel Core i3 (Intel Core i5/AMD Ryzen 5 recommended)	
Architecture		Intel
GPU	WebGL 1.0 Compatible (WebGL 2.0 Compatible recommended)	
RAM	2GB (16GB recommended)	
Storage	2GB (4GB recommended)	

\*Any mac supported by 10.15 Catalina is supported by AzureSpot Pro.



6747 Sierra Court, Suites A-B • Dublin, CA 94568 USA  
Phone: 925.307.7127 • Fax: 925.905.1816  
info@azurebiosystems.com • www.azurebiosystems.com

Download a 30-day trial  
of AzureSpot Pro



Copyright © 2021 Azure Biosystems. All rights reserved. The Azure Biosystems logo and Azure Biosystems® are trademarks of the Company. All other trademarks, service marks and trade names appearing in this brochure are the property of their respective owners.