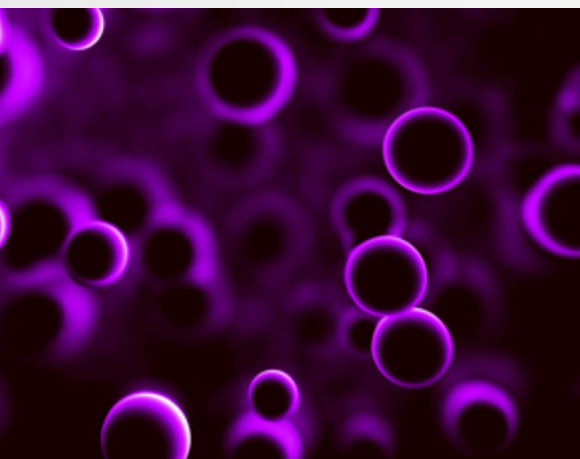




Sexually  
Transmitted  
Infections

# GeneProof<sup>®</sup>

## GeneProof Mycoplasma genitalium/hominis PCR Kit



### MORE INFORMATION WITH LESS SAMPLES

- Enables to distinguish *Mycoplasma hominis* from *Mycoplasma genitalium* using 3-channel system

### SIMPLE LABORATORY WORKFLOW

- Easily combinable with other GeneProof PCR kits in one workflow

### HIGH SENSITIVITY

- Secured by targeting the multicopy sequence of the 16S rRNA gene of *Mycoplasma genitalium*

### CONTAMINATION PREVENTION

- Master Mix contains Uracil-DNA glycosylase (UNG) and dUTPs eliminating carryover contamination

#### ORDER INFORMATION

REF	PACKAGE
MGH/ISEX/025	25 reactions
MGH/ISEX/100	100 reactions



COMPATIBLE WITH A WIDE RANGE OF REAL-TIME PCR DEVICES



CERTIFIED DIAGNOSTIC TEST

[www.geneproof.com](http://www.geneproof.com)

GUARANTEED CONTROL OVER THE COMPLETE PROCESS OF DEVELOPMENT, MANUFACTURING AND DISTRIBUTION OF ALL THE OFFERED GENEPROOF PRODUCTS



# GeneProof Mycoplasma genitalium/ hominis PCR Kit

- + GeneProof Chlamydia trachomatis PCR Kit
  - + GeneProof Neisseria gonorrhoeae PCR Kit
  - + GeneProof CT/NG/MG Multiplex PCR Kit
  - + GeneProof Gardnerella vaginalis PCR Kit
  - + GeneProof MH/UU/UP Multiplex PCR Kit
  - + GeneProof Mycoplasma genitalium/hominis PCR Kit
  - + GeneProof Ureaplasma PCR Kit
  - + GeneProof Herpes Simplex Virus (HSV-1/2) PCR Kit
  - + GeneProof Trichomonas vaginalis PCR Kit
  - + GeneProof Treponema pallidum PCR Kit
- FOR SCREENING PURPOSES**
- + GeneProof Human Papillomavirus (HPV) Screening PCR Kit

INDICATION	<i>in vitro</i> diagnostic medical device
REGULATORY STATUS	CE IVD
INTENDED USER	For professional use in laboratories with trained staff
TECHNOLOGY	Real-time PCR
TYPE OF ANALYSIS	Qualitative
TARGET SEQUENCE	A multicopy sequence of the gene encoding the 16S rRNA ( <i>M. genitalium</i> ) and the housekeeping <i>gap</i> gene for glyceraldehyde-3-phosphate dehydrogenase ( <i>M.hominis</i> )
ANALYTICAL SPECIFICITY	<i>M. genitalium</i> , 100 % <i>M. hominis</i> , 100 %
ANALYTICAL SENSITIVITY (LoD)	Reaches up to 1.256 cp/μl with the probability of 95 % for <i>M. genitalium</i> Reaches up to 1.196 cp/μl with the probability of 95 % for <i>M. hominis</i>
EXTRACTION/INHIBITION CONTROL	PCR inhibition and DNA extraction efficiency control
VALIDATED SPECIMEN	<b>Swab, urine</b>
STORAGE	-20 ± 5 °C
VALIDATED EXTRACTION METHODS	croBEE 201A Nucleic Acid Extraction System GeneProof PathogenFree DNA Isolation Kit
INSTRUMENTS	croBEE Real-Time PCR System AriaMx Real-Time PCR System CFX Connect™ / CFX96™/ Dx Real-Time PCR Detection System LineGene 9600 / 9600 Plus Mic qPCR Cyclers Rotor-Gene 3000 / 6000 / Q QuantStudio™ 3 / 5 Real-Time PCR System StepOne™ / StepOnePlus™ Real-Time PCR System SLAN® Real-Time PCR System
REQUIRED DETECTION CHANNELS	FAM, HEX, Cy5
EXTERNAL QUALITY ASSESSMENT	Regularly tested in QCMD and Instand e.V. External Quality Assessment Panels - results at <a href="http://www.geneproof.com">www.geneproof.com</a>